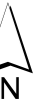




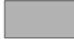
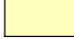





Elaborato RIR Comune di Grassobbio

Tavola 2A - ERCA S.p.A.
AREE DI DANNO DI PERTINENZA
DELLA ERCA S.P.A.

Scala 1:4.000



Legenda

-  Confine comunale di Grassobbio
-  Altri confini comunali
-  Edificato
-  Viabilità
-  ERCA S.p.A.
-  Punti Sorgente eventi incidentali
-  Z1 - Zona di impatto (Elevata/Inizio Letalità)
-  Z2 - Zona di danno (Lesioni Irreversibili)
-  Z3 - Zona di attenzione (Lesioni Reversibili)

Comune di Orío al Serio

Comune di Zanica

Comune di
Grassobbio

